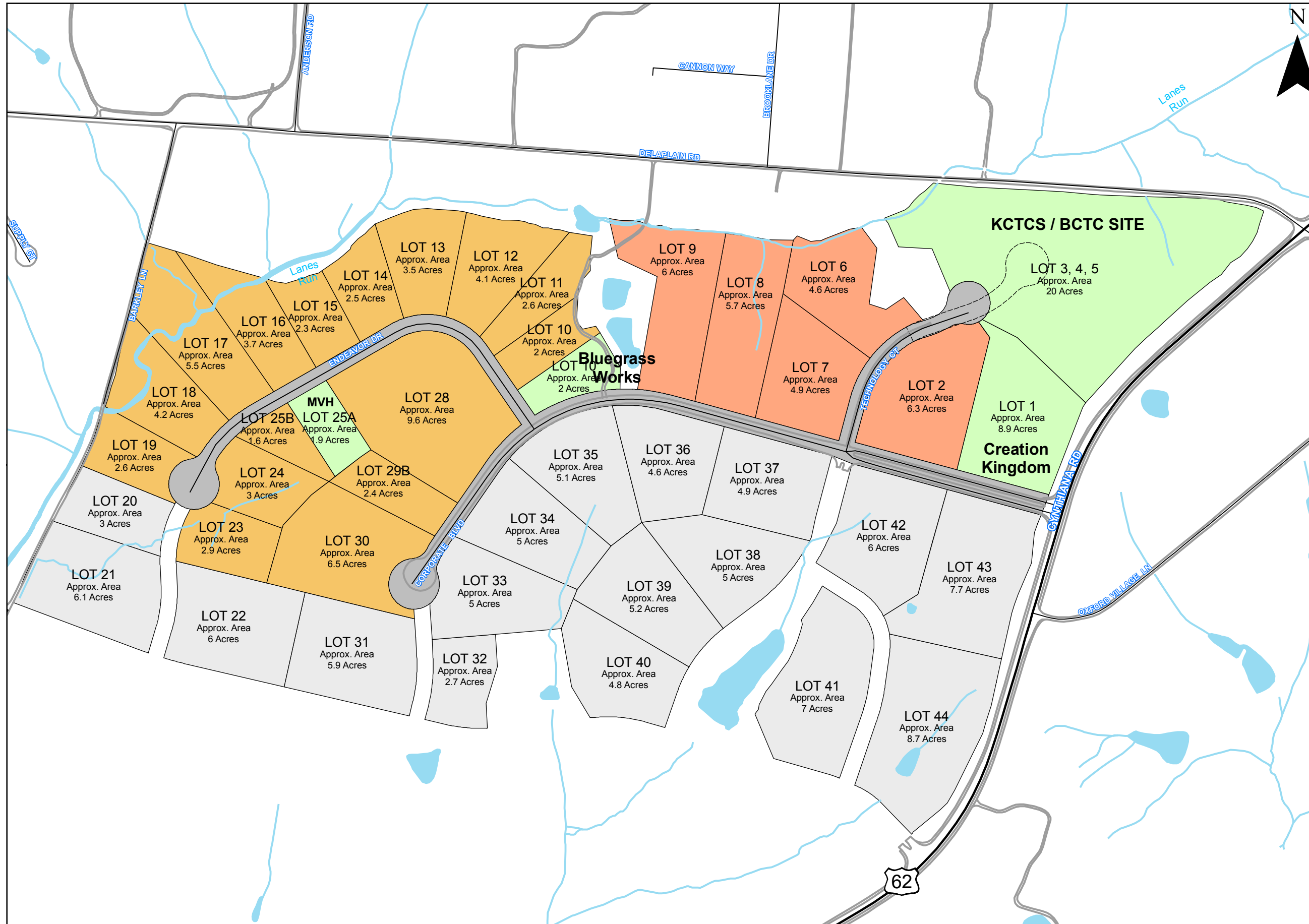


Lanes Run Business Park



Legend

Cul-de-sac Edit, 3-2007

- Preliminary Amendment

Parcels

- For Sale BP-1
- For Sale I-1E
- Not Developed
- Sold
- Pending
- Business Park Roads

Source: Parcel boundaries obtained from Quest Engineers.

For more information please contact Jack Conner at the Chamber of Commerce at 502-863-5424.

Bluegrass Advanced Manufacturing Center Siteplan from Ekhoﬀ, Ochenkoski & Polk Architects

Cul-de-sac edit made by GIS & does not represent work done by an engineering firm



Map by the Georgetown-Scott County Planning Commission GIS
230 E. Main St.
Georgetown, KY 40324
502-867-3701 Fx 502-867-3725
www.gscplanning.com
Printed 10/01/2009

GEORGETOWN-SCOTT CO. PLANNING COMMISSION
GEOGRAPHIC INFORMATION SYSTEM MAPPING
COPYRIGHT, LIMITATION OF LIABILITY AND ACCURACY STATEMENT
The following statement is applicable to all maps produced by the Georgetown-Scott County Planning Commission Geographic Information System (GSCPGIS). All rights reserved. No part of this map may be reproduced or transmitted in any form or by any means, electronic or mechanical, including photocopying and recording, or by any information storage or retrieval system, except as expressly permitted in writing by GSCPGIS.
LIMITATION OF LIABILITY: GSCPGIS has no indication or reason to believe that there are any inaccuracies or defects of information incorporated in this work and makes NO REPRESENTATIONS OF ANY KIND, INCLUDING, BUT NOT LIMITED TO THE WARRANTIES OR MERCHANTABILITY OR FITNESS FOR A PARTICULAR USE, NOR ARE ANY SUCH WARRANTIES TO BE IMPLIED, WITH RESPECT TO THE INFORMATION OR DATA FURNISHED HEREIN. INFORMATION REGULATORY REQUIREMENTS: APPLICANT FURTHER WARRANTS THAT THE INFORMATION PURCHASED SHALL BE USED EXCLUSIVELY FOR THE PURPOSE FOR WHICH IT WAS CREATED.
GSCPGIS aerial photography and digital mapping prepared by Photo Science, Inc., Lexington, KY. Date of photography: March 25, 1998 in accordance with the National Map Accuracy Standards. Selected areas updated November 25, 2003 by Photo Science, Inc., Lexington, KY. Only first order fully analytical stereoscopic used for stereo compilation work. Horizontal Datum is based on the Kentucky State Plane Coordinate System North Zone, North American Datum 1983 (NAD83) in US feet and tied to the Kentucky WARM Network. Vertical Datum is based on the 1988 adjustment of the National Geodetic Vertical Datum of 1929.
* Mapping available in digital or hard copy format in accordance with the adopted fee schedule and standards set out in the Records Request Form.